

DATA CENTER MANAGED SERVICES

COMPLIANT ASSET TRACKING SERVICE

BUSINESS CHALLENGE

Changing business and operational imperatives places new demands on your data center. You're constantly adding new equipment and replacing aging hardware to keep pace. You face soaring maintenance costs – not just from the new servers added, but also from the replaced equipment, but never fully decommissioned.

As you continue to update your data center, it can also be challenging to keep accurate records of what's happening with your equipment. When it comes time to locate a specific piece of hardware, it may consume your IT team's time, lead to unnecessary expenditures, or expose your organization to legal and regulatory risk.

WHAT IF YOU COULD...

- ✓ Quickly and accurately locate data center assets and spares?
- ✓ Stop paying maintenance for hardware you no longer use?
- ✓ Minimize the legal and compliance risk associated with lost or misplaced equipment?

KNOW WHAT'S IN YOUR COLOCATION DATA CENTER

Iron Mountain's Compliant Asset Tracking Service (CATS) can track your data center assets in real-time, from initial

receipt to final disposition. Compliant Asset Tracking Service uses industry-leading Radio Frequency Identification (RFID) technology and a dynamic, auditable inventory management framework. The service provides numerous capabilities, including:

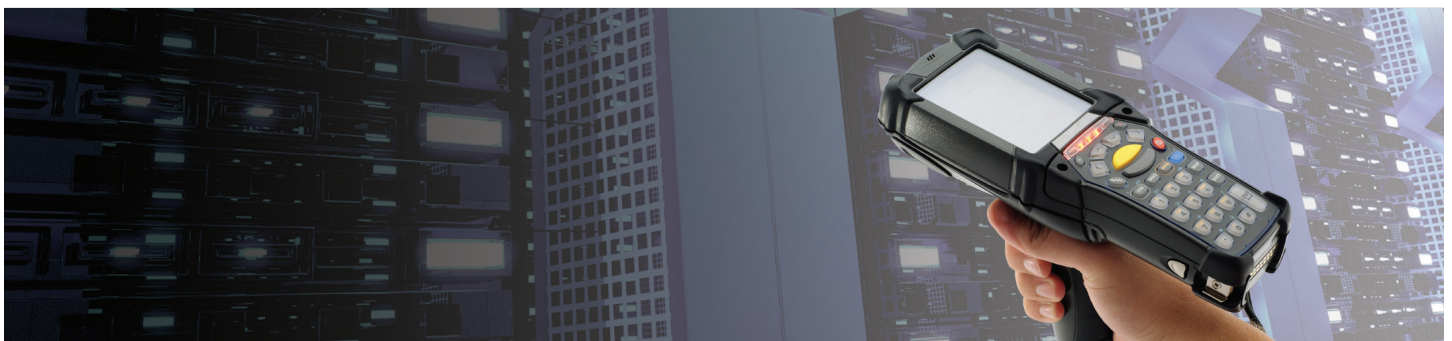
- ✓ Automatic, real-time inventory updates
- ✓ Complete IT asset lifecycle management
- ✓ Secure chain of custody

AUTOMATIC INVENTORY UPDATES

The Compliant Asset Tracking Service maintains an up-to-date, accurate inventory of all your equipment hosted with an Iron Mountain facility. RFID tagging integrated into our Web-based Data Center Infrastructure Management (DCIM) portal gives you a detailed rack elevation view of your assets for full visibility and control.

COMPLETE IT ASSET LIFECYCLE MANAGEMENT

With Iron Mountain's Compliant Asset Tracking Service, you can get a robust data center asset lifecycle management capability that gives you full visibility into spares in storage, assets currently deployed, and equipment ready for decommissioning and destruction. You can reduce your power, cooling, and maintenance expenses while gaining the visibility you need to manage your asset inventory.



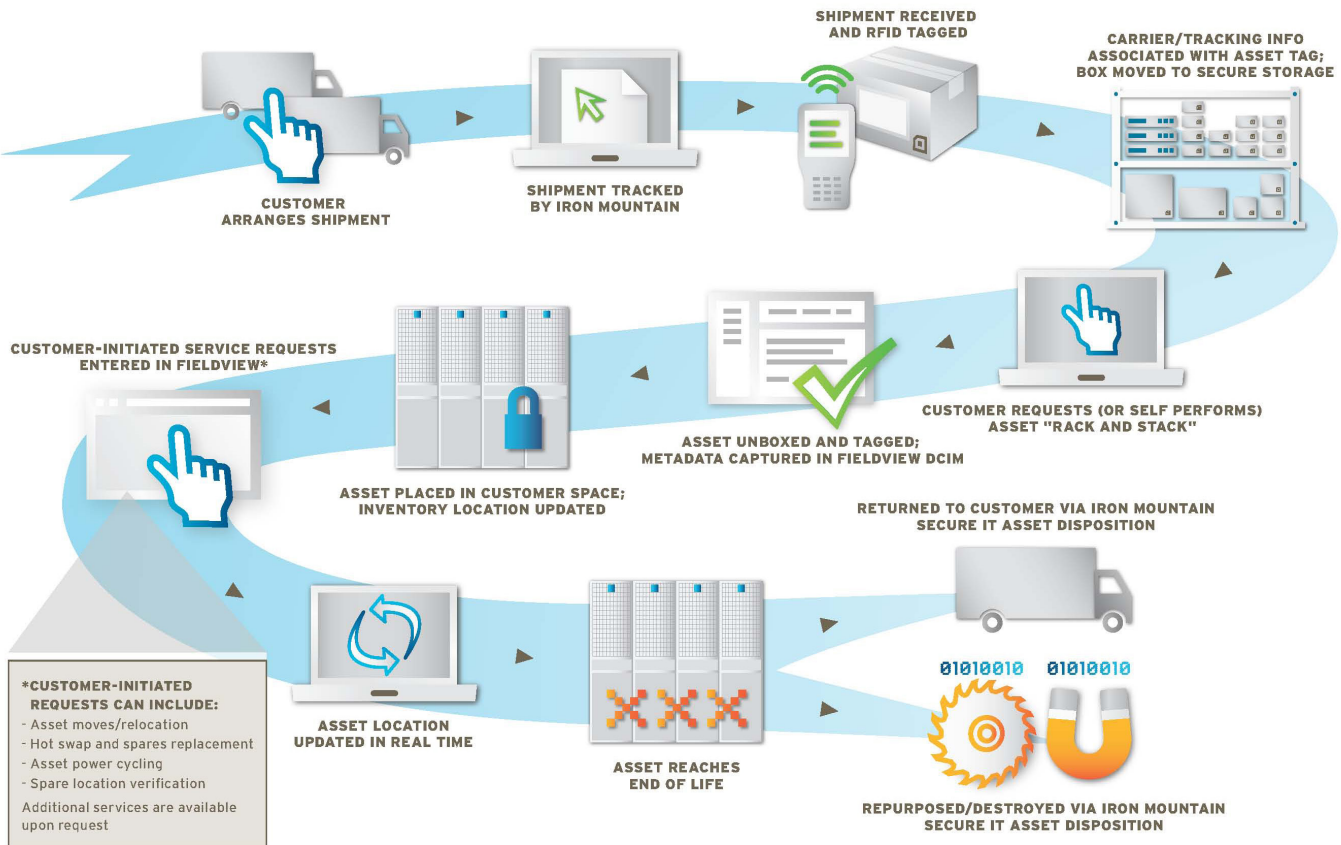
SECURE CHAIN OF CUSTODY

The Compliant Asset Tracking Service leverages Iron Mountain's security expertise and operational best practices to help you apply an auditable chain of custody to equipment moves and data migrations. You will have a documented record of which equipment has moved and when so that you can expedite server migrations and meet your compliance obligations – all while avoiding the fines and penalties associated with lost, misplaced, or stolen hardware.

WHAT YOU GAIN

- ✓ Increased visibility into your data center asset inventory and reduced expense due to maintenance or obsolescence.
- ✓ Free up your staff's time to focus on strategic priorities instead of tracking down hardware.
- ✓ Compliance with your internal controls and reduced risk of lost or stolen hardware.

IRON MOUNTAIN COMPLIANCE ASSET TRACKING SERVICE (CATS) WORKFLOW



ABOUT IRON MOUNTAIN'S DATA CENTER SOLUTIONS

For more than a decade, enterprise organizations have trusted Iron Mountain to develop and manage their data center environments with a portfolio of ultra-secure facilities and compliant services. Iron Mountain's carrier and service provider neutral facilities offer both retail colocation and wholesale data center leasing options. This solution leverages Iron Mountain's 63-year heritage of protecting information, helping organizations bring the same high levels of security and compliance to their data center environments. The company's national data center is located within a unique, 145-acre underground location outside Pittsburgh, Pennsylvania with additional data centers in Boston, Massachusetts and Kansas City, Missouri. For more information, visit www.ironmountain.com/datacenters.